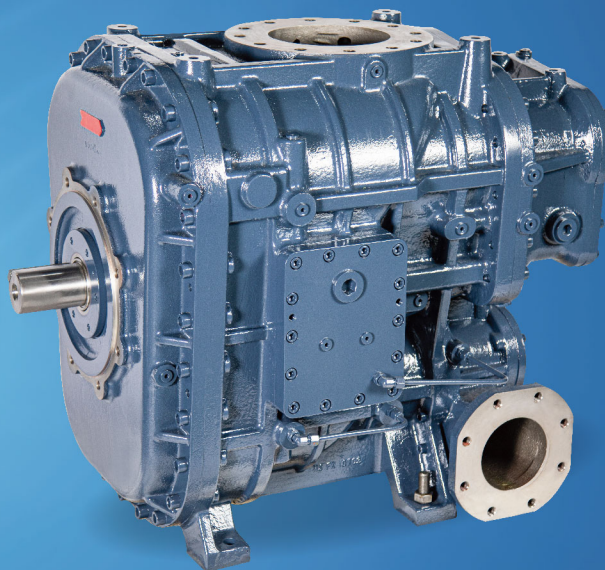


ABD-B

Two-Stage Normal Pressure (Gear) Series



Product Features

Improved Efficiency

Utilizes advanced two-stage compression technique that reduces the compression ratio and reflux leakage of each stage, improving overall volumetric efficiency. The entire series satisfies the highest energy efficiency grade requirements of international standards.

Optimized Structure

Integrated structural design of the two independent compression units minimizes internal loss. Adopts internal vaporized oil spray cooling method to reduce the second stage suction temperature and achieve isothermal compression. Utilizes advanced oil recirculation design that prevents leakages during shaft seal failures. Both ends of the rotors use a variety of effective sealing components that optimize sealing performance.

Reduced Noise

Exclusive rotor profile design, manufactured using high precision German production equipment, and measured using advanced Coordinate Measuring Machine to ensure the precision of all parts. Large rotor, low speed design principle ensures minimal noise, small vibration, and high stability.

Improved Durability

Designed to tolerate large loading and utilizes world-class brands of bearings. In addition, two-stage design reduces the bearing load for each compression stage to ensure improved durability.

Application Industry

Steel, Machinery, Transportation, Mining, Chemical Fiber, etc.



ABD-B Two-Stage Normal Pressure (Gear) Series

Application Pressure: 6 ~ 13 bar.g

8 bar. g data

Rated Power (kW)	Model	50Hz					60Hz				
		Gear Ratio	Moter Speed (RPM)	Air Flow (m ³ /min)	Shaft Power (kW)	Specific Power (kW/m ³ /min)	Gear Ratio	Moter Speed (RPM)	Air Flow (m ³ /min)	Shaft Power (kW)	Specific Power (kW/m ³ /min)
18.5	ABD-240B	0.93	2950	3.48	19.60	5.63	0.77	3550	3.42	19.25	5.63
22		1.18	2950	4.26	23.50	5.52	0.93	3550	4.19	23.12	5.52
30		1.52	2950	5.67	31.80	5.61	1.24	3550	5.53	31.02	5.61
30	ABD-420B	0.93	2950	5.89	32.62	5.54	0.73	3550	5.90	32.69	5.54
37		1.18	2950	7.49	41.74	5.57	0.93	3550	7.09	39.48	5.57
45		1.52	2950	9.14	51.09	5.59	1.08	3550	8.69	48.58	5.59
55	ABD-1030B	1.42	1490	11.86	63.60	5.36	1.10	1790	10.64	57.05	5.36
75		1.87	1490	15.70	84.60	5.39	1.42	1790	14.25	76.80	5.39
90		2.30	1490	19.10	105.98	5.55	1.79	1790	17.85	97.30	5.45
90	ABD-1580B	1.46	1490	17.70	94.20	5.32	1.22	1790	17.70	94.20	5.32
110		1.77	1490	21.45	115.40	5.38	1.46	1790	21.26	114.40	5.38
132		2.09	1490	25.35	139.70	5.51	1.77	1790	25.77	141.99	5.51
132	ABD-1900B	1.74	1490	26.34	141.05	5.35	1.74	1790	25.60	138.30	5.40
160		2.09	1490	31.33	167.96	5.36	1.74	1790	31.56	171.30	5.43
185		2.45	1490	36.37	197.53	5.43	2.02	1790	36.40	199.84	5.49
132	ABD-3300B	1.09	1490	27.90	148.63	5.33	0.89	1790	27.30	145.51	5.33
160		1.28	1490	32.33	174.38	5.39	1.04	1790	31.85	171.66	5.39
185		1.42	1490	36.04	196.03	5.44	1.21	1790	36.89	200.70	5.44
200	ABD-5600B	1.62	1490	40.70	224.05	5.50	1.28	1790	38.84	213.60	5.50
220		1.80	1490	45.30	254.00	5.61	1.42	1790	43.20	239.00	5.53
200		0.94	1490	40.00	211.30	5.28	0.78	1790	39.58	209.00	5.28
220	ABD-5600B	1.07	1490	45.60	243.80	5.35	0.87	1790	43.30	232.08	5.36
250		1.18	1490	50.34	275.03	5.46	0.94	1790	48.05	262.30	5.46
280		1.28	1490	54.60	302.21	5.53	1.07	1790	54.78	302.90	5.53
315	ABD-5600B	1.45	1490	61.30	344.90	5.63	1.18	1790	60.40	340.20	5.63
355		1.57	1490	66.38	380.35	5.73	1.28	1790	65.59	373.88	5.70

About Hanbell

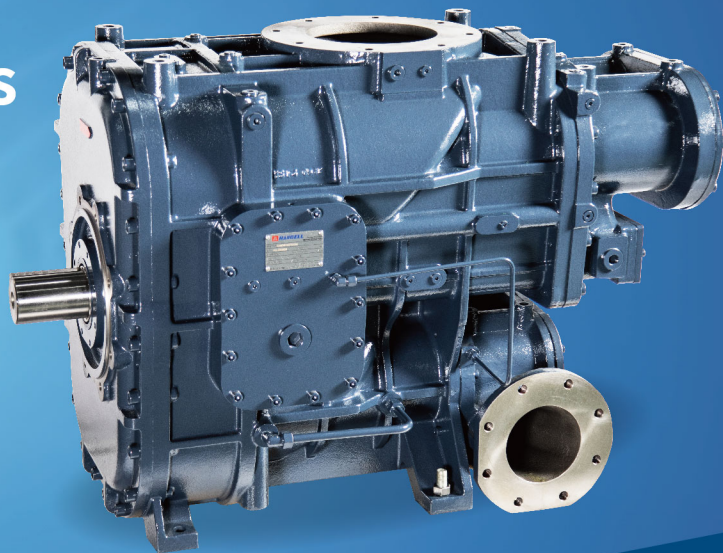
Shanghai Hanbell Precise Machinery is a world leader in compressor and pump technologies. The company is headquartered in Fengjing, an ancient town in the beautiful Jinshan district of Shanghai. Hanbell began public listing on the Shenzhen Stock Exchange (A-Shares) in August, 2008 as the first Taiwanese-invested public company in Shanghai.

The company specializes in the research and development, design, production, sales, and service of compressors and pumps for application in a variety of industries. After years of continued growth, the company's products and services have expanded to integrate design and production with energy management and system operations. Hanbell delivers exceptional value to customers with our innovative products, first-class service, high quality, and competitive pricing.



ABD-BL

Two-Stage Low Pressure (Gear) Series



Product Features

Improved Efficiency

Utilizes advanced two-stage compression technique that reduces the compression ratio and reflux leakage of each stage, improving overall volumetric efficiency. The entire series satisfies the highest energy efficiency grade requirements of international standards.

Optimized Structure

Integrated structural design of the two independent compression units minimizes internal loss. Adopts internal vaporized oil spray cooling method to reduce the second stage suction temperature and achieve isothermal compression. Utilizes advanced oil recirculation design that prevents leakages during shaft seal failures. Both ends of the rotors use a variety of effective sealing components that optimize sealing performance.

Reduced Noise

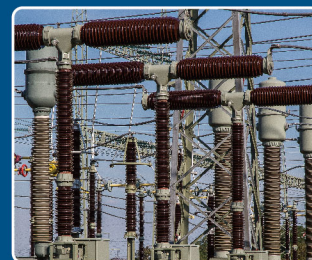
Exclusive rotor profile design, manufactured using high precision German production equipment, and measured using advanced Coordinate Measuring Machine to ensure the precision of all parts. Large rotor, low speed design principle ensures minimal noise, small vibration, and high stability.

Improved Durability

Designed to tolerate large loading and utilizes world-class brands of bearings. In addition, two-stage design reduces the bearing load for each compression stage to ensure improved durability.

Application Industry

Textile, Steel, Machinery, Electric Power, etc.



ABD-BL Two-Stage Low Pressure (Gear) Series

Application Pressure: 4 ~ 6 bar.g

5 bar. g data

Rated Power (kW)	Model	50Hz					60Hz				
		Gear Ratio	Moter Speed (RPM)	Air Flow (m ³ /min)	Shaft Power (kW)	Specific Power (kW/m ³ /min)	Gear Ratio	Moter Speed (RPM)	Air Flow (m ³ /min)	Shaft Power (kW)	Specific Power (kW/m ³ /min)
22	ABD-420BL	0.93	2950	5.89	26.90	4.57	0.73	3550	5.93	27.08	4.57
30		1.18	2950	7.49	34.22	4.57	0.93	3550	7.12	32.55	4.57
37		1.52	2950	9.14	41.95	4.59	1.08	3550	8.73	40.09	4.59
45	ABD-1030BL	1.42	1490	11.86	52.60	4.44	1.10	1790	10.69	47.43	4.44
55		1.87	1490	15.70	69.99	4.46	1.42	1790	14.32	63.83	4.46
75		2.30	1490	19.10	87.72	4.59	1.79	1790	17.94	82.39	4.59
75	ABD-1580BL	1.46	1490	17.70	78.06	4.41	1.22	1790	17.79	78.45	4.41
90		1.77	1490	21.45	95.66	4.46	1.46	1790	21.37	95.30	4.46
110		2.09	1490	25.35	115.81	4.57	1.77	1790	25.90	118.32	4.57
110	ABD-1900BL	1.74	1490	26.34	115.62	4.39	1.42	1790	25.73	112.93	4.39
132		2.09	1490	31.33	138.94	4.43	1.74	1790	31.72	140.66	4.43
160		2.45	1490	36.37	163.45	4.49	2.02	1790	36.58	164.41	4.49
110	ABD-3300BL	1.09	1490	27.90	122.82	4.40	0.89	1790	27.44	120.78	4.40
132		1.28	1490	32.33	144.09	4.46	1.04	1790	32.01	142.66	4.46
160		1.42	1490	36.04	162.00	4.50	1.21	1790	37.07	166.65	4.50
185	ABD-5600BL	1.62	1490	40.70	185.17	4.55	1.28	1790	39.03	177.59	4.55
200		1.80	1490	45.30	209.88	4.63	1.42	1790	43.42	201.16	4.63
160		0.94	1490	40.00	174.62	4.37	0.78	1790	39.78	173.65	4.37
185	ABD-5600BL	1.07	1490	45.60	201.46	4.42	0.87	1790	43.52	192.26	4.42
200		1.18	1490	50.34	227.23	4.51	0.94	1790	48.29	217.97	4.51
220		1.28	1490	54.60	249.75	4.57	1.07	1790	55.05	251.83	4.57
250	ABD-5600BL	1.45	1490	61.30	285.00	4.65	1.18	1790	60.70	282.22	4.65
280		1.57	1490	66.38	314.33	4.74	1.28	1790	65.92	312.16	4.74

About Hanbell

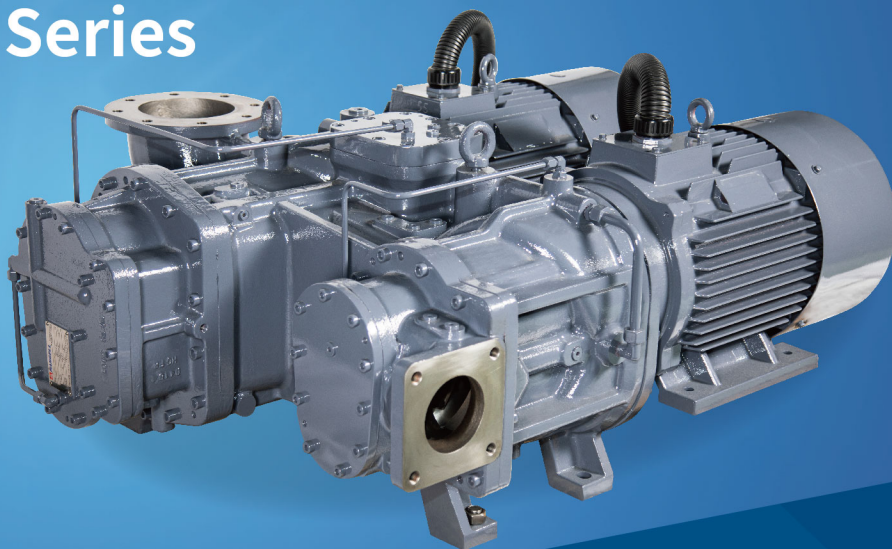
Shanghai Hanbell Precise Machinery is a world leader in compressor and pump technologies. The company is headquartered in Fengjing, an ancient town in the beautiful Jinshan district of Shanghai. Hanbell began public listing on the Shenzhen Stock Exchange (A-Shares) in August, 2008 as the first Taiwanese-invested public company in Shanghai.

The company specializes in the research and development, design, production, sales, and service of compressors and pumps for application in a variety of industries. After years of continued growth, the company's products and services have expanded to integrate design and production with energy management and system operations. Hanbell delivers exceptional value to customers with our innovative products, first-class service, high quality, and competitive pricing.



ABD-D

Two-Stage Normal Pressure (Dual PM Motor) Series



Product Features

Improved Efficiency

Utilizes advanced two-stage compression technique and integrates high-efficiency permanent magnet (PM) motor. The motor and rotor are directly connected by an internal shaft to achieve 100% transmission efficiency. The two variable speed compression stages can be controlled to adjust the pressure between stages, therefore optimizing performance for various discharge pressure conditions. The entire series satisfies the highest energy efficiency grade requirements of international standards.

Optimized Structure

Integrated structural design of the two independent compression units minimizes internal loss. Adopts internal vaporized oil spray cooling method to reduce the second stage suction temperature and achieve isothermal compression. Utilizes advanced oil recirculation design that prevents leakages during shaft seal failures. Both ends of the rotors use a variety of effective sealing components that optimize sealing performance.

Low noise

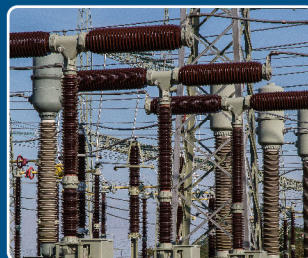
Exclusive rotor profile design, manufactured using high precision German production equipment, and measured using advanced Coordinate Measuring Machine to ensure the precision of all parts. The dual PM motor series compressors are designed without motor bearing, gear bite, or coupling drive, therefore effectively reduces the noise source, ensuring minimal noise, small vibration, and high stability.

Improved Durability

Designed to tolerate large loading and utilizes world-class brands of bearings. In addition, two-stage design reduces the bearing load for each compression stage to ensure improved durability.

Application Industry

Steel, Machinery, Electric Power, Mining, Chemical Fiber, etc.



ABD-D Two-Stage Normal Pressure (Dual PM Motor) Series

Application Pressure: 6 ~ 10 bar.g

Rated Power (kW)	Model	Discharge Pressure (bar.g)	Air Flow (m ³ /min)	Shaft Power (kW)	Specific Power (kW/m ³ /min)
55	ABD-1030D (M=1A1)	6	14.8	72.9	4.92
		8	12.9	72.8	5.65
		10	11.2	72.8	6.50
75	ABD-1030D (M=2A1)	6	18.1	89.0	4.93
		8	15.9	89.1	5.61
		10	13.8	87.6	6.36
90	ABD-1560D (M=1A1)	6	21.2	109.7	5.17
		8	19.1	109.4	5.73
		10	17.1	111.9	6.54
110	ABD-1560D (M=2A1)	6	26.2	137.5	5.26
		8	24.4	132.7	5.44
		10	20.5	131.9	6.44

About Hanbell

Shanghai Hanbell Precise Machinery is a world leader in compressor and pump technologies. The company is headquartered in Fengjing, an ancient town in the beautiful Jinshan district of Shanghai. Hanbell began public listing on the Shenzhen Stock Exchange (A-Shares) in August, 2008 as the first Taiwanese-invested public company in Shanghai.

The company specializes in the research and development, design, production, sales, and service of compressors and pumps for application in a variety of industries. After years of continued growth, the company's products and services have expanded to integrate design and production with energy management and system operations. Hanbell delivers exceptional value to customers with our innovative products, first-class service, high quality, and competitive pricing.



AAD-A/B

Two-Stage Medium Pressure Series



Product Features

Improved Durability

The two rotary screws are made with special custom alloy steel with high strength and service life. Utilizes imported high efficiency bearings in an advanced high temperature, high pressure bearing design, greatly extending the service life.

Optimized Structure

Integrated structural design of the two independent compression units minimizes internal loss. Adopts internal vaporized oil spray cooling method to reduce the second stage suction temperature and achieve isothermal compression. Utilizes advanced oil recirculation design that prevents leakages during shaft seal failures. Both ends of the rotors use a variety of effective sealing components that optimize sealing performance.

Large Torque Drive

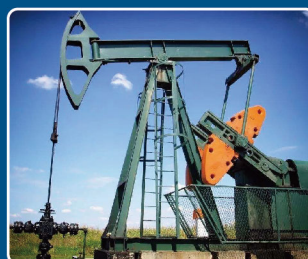
Built with extra thick and reinforced extended shaft that improves torque strength, allowing various large torque drives to be used.

Reduced Noise

Exclusive rotor profile design, manufactured using high precision German production equipment, and measured using advanced Coordinate Measuring Machine to ensure the precision of all parts. Large rotor, low speed design principle ensures minimal noise, small vibration, and high stability.

Application Industry

Drilling, Bottle Manufacturing, Machinery, Mining, etc.



AAD-A/B Two-Stage Medium Pressure Series

Application Pressure: 17 ~ 35 bar.g

1800 rpm data

Model	Gear Ratio	Discharge Pressure (bar.g)	Discharge Temperature (°C)	Air Flow (m ³ /min)	Shaft Power (kW)
AAD-1560A	1.13	18	95	16.40	140.40
		20	100	15.90	151.00
		25	105	15.40	160.00
		30	115	14.80	173.60
AAD-1560B	1.26	18	95	17.50	147.00
		20	100	16.90	155.80
		25	105	16.70	179.40
		30	115	16.50	212.70
AAD-1560B	1.57	18	95	23.70	195.10
		20	100	22.90	209.50
		25	105	22.70	238.10
		30	115	22.40	282.30
AAD-2600B	1.09	18	95	25.70	209.70
		20	100	25.40	220.30
		25	105	24.70	244.90
		30	115	24.10	263.40
AAD-2600B	1.27	18	95	29.70	242.50
		20	100	29.30	254.70
		25	105	28.50	283.20
		30	115	27.90	304.50
AAD-2600B	1.52	18	95	35.70	291.90
		20	100	35.30	306.70
		25	105	34.30	341.00
		30	115	33.50	366.60

About Hanbell

Shanghai Hanbell Precise Machinery is a world leader in compressor and pump technologies. The company is headquartered in Fengjing, an ancient town in the beautiful Jinshan district of Shanghai. Hanbell began public listing on the Shenzhen Stock Exchange (A-Shares) in August, 2008 as the first Taiwanese-invested public company in Shanghai.

The company specializes in the research and development, design, production, sales, and service of compressors and pumps for application in a variety of industries. After years of continued growth, the company's products and services have expanded to integrate design and production with energy management and system operations. Hanbell delivers exceptional value to customers with our innovative products, first-class service, high quality, and competitive pricing.

